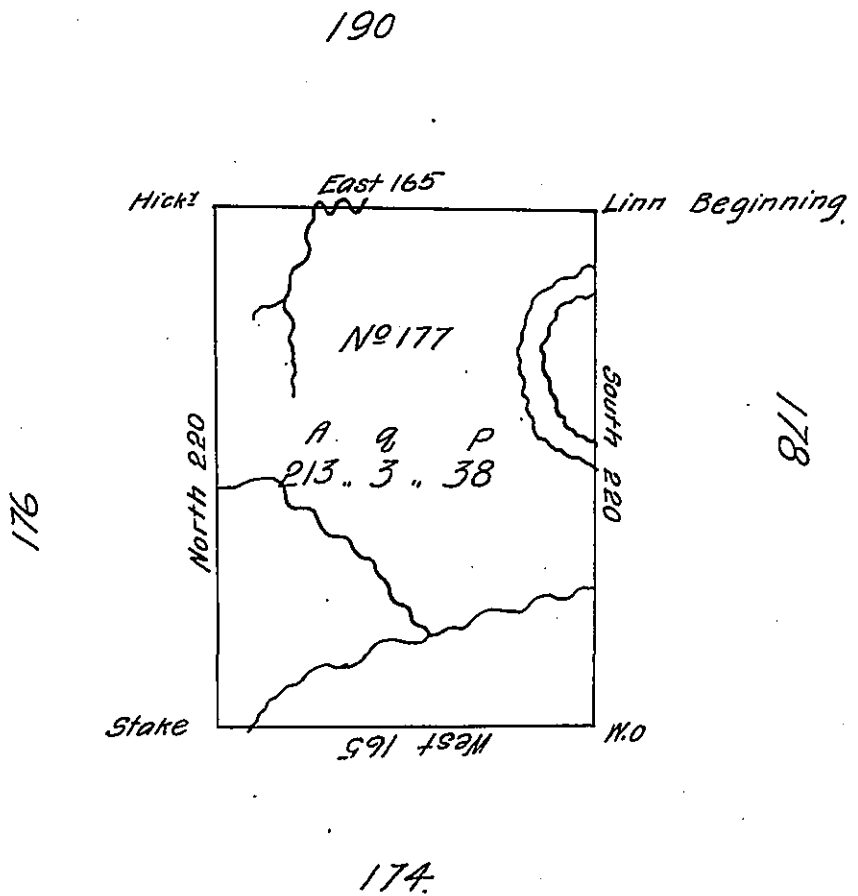


✓



The above is a Draught of a Survey made the 7th day of June 1786
 in pursuance of Instructions from the Surveyor General. Situate on the Waters
 of Brush Creek on the West side of the Ohio River in District No 2 being part
 of the land to be sold for the Redemption of the Depreciation Certificates
 Containing two hundred & thirteen acres, three quarters & thirty eight poles
 with allowance of 6 P^c Ct.

Dan^l Leet D. S.

To John Lukens Esq^t
 Surveyor Gen^l

IN TESTIMONY that the above is a copy of the original remaining on file in
 the Department of Internal Affairs of Pennsylvania, made
 conformably to an Act of Assembly approved the 16th day of
 February, 1833, I have hereunto set my Hand and caused
 the Seal of said Department to be affixed at Harrisburg,
 this sixteenth day of August 1905.

Laurel D. Brown
 Secretary of Internal Affairs.